

**Tubing & Pipe  
Bulkhead Connections for ALL  
Purging & Pressurization Systems**

**BBCF**

The Model BBCF Bulkhead Connection Kit provides standard nut and ferule tubing connections to a protected enclosure for a purging or pressurization system's supply and reference tubing. The Model BBCF consists of one 1/4" through wall stainless steel bulkhead fitting for atmospheric reference and one 1/4", 3/8" or 1/2" through wall stainless steel bulkhead fitting, depending on model selected, for the supply connection to the protected enclosure.

**BFCF**

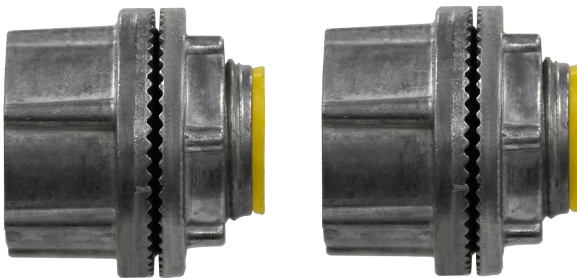
The Model BFCF Bulkhead Connection Kit provides standard nut and ferule tubing connections to a protected enclosure for a purging or pressurization system's supply and reference tubing. The Model BFCF consists of one 1/4" flush mount stainless steel bulkhead fitting for atmospheric reference and one 1/4", 3/8" or 1/2" through wall stainless steel bulkhead fitting, depending on model selected, for the supply connection to the protected enclosure.

**FFCF**

The Model FFCF Bulkhead Connection Kit provides standard nut and ferule tubing connections to a protected enclosure for a purging or pressurization system's supply and reference tubing. The Model FFCF consists of one 1/4" flush mount stainless steel bulkhead fitting for atmospheric reference and one 1/4", 3/8" or 1/2" flush mount stainless steel bulkhead fitting, depending on model selected, for the supply connection to the protected enclosure.

**EPC**

The Model EPC Enclosure Pipe Connection Kit provides an NPT connection to a protected enclosure for piping between multiple purged or pressurized enclosures. The Model EPC consists of two 3/4", 1 1/4" or 1 1/2" flush mount zinc die cast bulkhead fittings.



**Model EPC  
Enclosure Pipe Connection Kit**

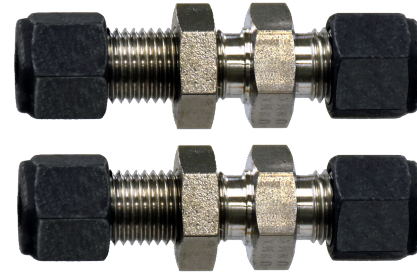


**Model BBCF, BFCF,  
BFFK & EPC**

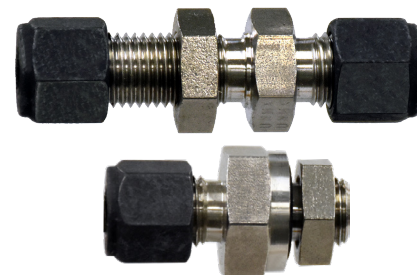
**Tubing & Pipe Bulkhead Connection Kits**

Technical Bulletin BCK TB-R0

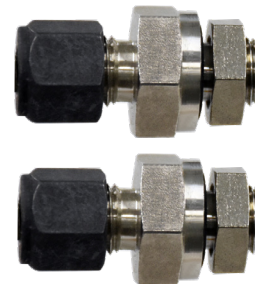
© 06.20.2018



**Model BBCF  
Through Wall Supply & Reference  
Bulkhead Connection Kit**



**Model BFCF  
Through Wall Supply & Flush Reference  
Bulkhead Connection Kit**



**Model FFCF  
Flush Mount Supply & Reference  
Bulkhead Connection Kit**



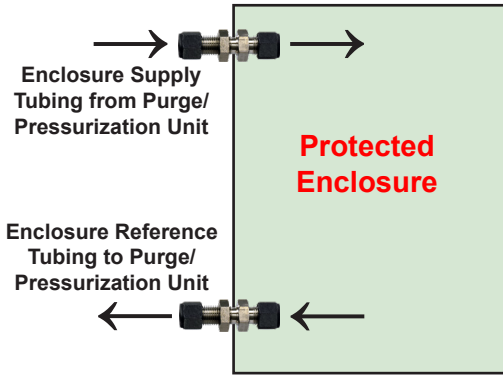
**Best Purging Systems**  
Enclosure Purging & Pressurization Solutions

4725 Lawndale • La Marque, Texas 77568

Phone: 409.316.4920 • Fax: 409.935.5819  
www.purgeit.com • 1.844 PURGE IT

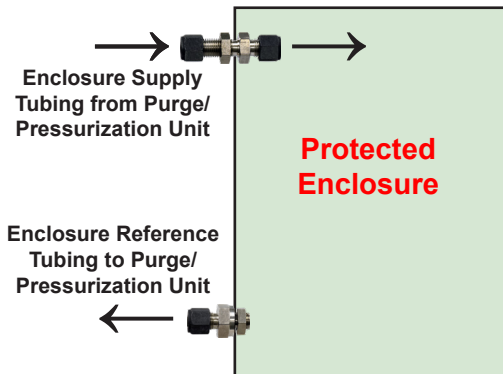
## Typical Enclosure Connections

**Model BBCF**



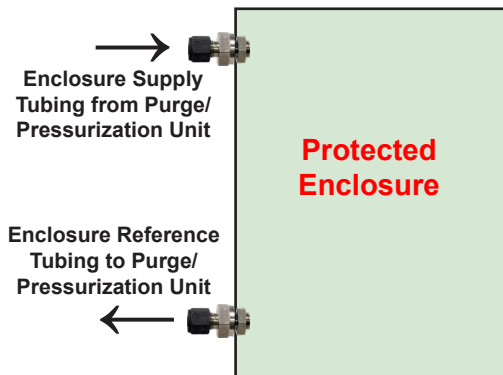
*Allows continuation of Supply & Reference Tubing within Protected Enclosure to preferred locations of supply and reference*

**Model BFCF**



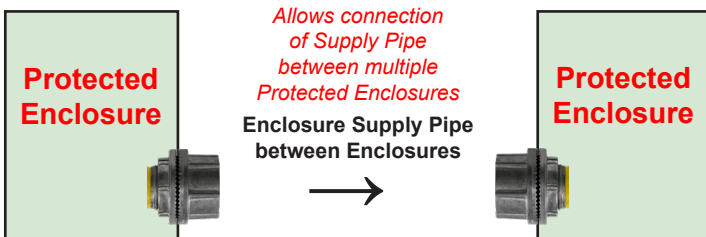
*Allows continuation of Supply Tubing within Protected Enclosure to a preferred location for supply*

**Model FFCF**



*Terminates Supply & Reference Tubing at Protected Enclosure bulkhead*

**Model EPC**



*Allows connection of Supply Pipe between multiple Protected Enclosures*

*Model EPC is intended for use between any quantity of multiple enclosures with any connection fitting kit above that will provide supply tubing from a Purge or Pressurization Unit to the first enclosure in the series and the reference tubing from the last enclosure in the series*

## Model Number Matrix

Model # **BBCF - A2**

Connection Kit Model \_\_\_\_\_

**BBCF-** Through Wall Bulkhead Connection Kit

**BFCF-** Through Wall & Flush Bulkhead Connection Kit

**FFCF-** Flush Bulkhead Connection Kit

**EPC-** Enclosure Pipe Connection Kit

Compatible Systems \_\_\_\_\_

**A2-** All YZ101A & YZ102 Configurations

**B3-** All YZ101B & YZ103 Configurations

**C4-** All YZ101C & YZ104 Configurations

## Connection Kits Fitting Sizes Chart

	A2	B3	C4
<b>BBCF</b> - One (1) each			
Supply	1/4"	3/8"	1/2"
Reference	1/4"	1/4"	1/4"
<b>BFCF</b> - One (1) each			
Supply	1/4"	3/8"	1/2"
Reference	1/4"	1/4"	1/4"
<b>FFCF</b> - One (1) each			
Supply	1/4"	3/8"	1/2"
Reference	1/4"	1/4"	1/4"
<b>EPC</b> - Two (2)			
Pipe Connection	3/4"	1-1/4"	1-1/2"

## Material Specifications

**Models: BBCF, BFCF & FFCF**

Body & Ferrules: 316 Grade Stainless Steel

Nuts: Molybdenum disulfide coated 316 Stainless Steel

**Model: EPC**

Hub & Locknut: Zinc Die Cast

Insulating Throat: Thermoplastic

Sealing Ring: BUNA "N" Nitrile

Specifications subject to change without notice, warranty & liability statements available upon request.